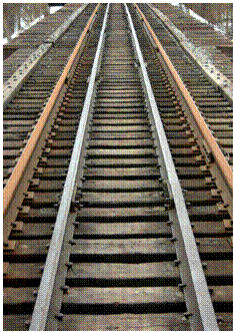




and Fullerton, the trains will be using 3-tracks instead of 4 tracks as the major construction occurs at these two stations. This has been heavily publicized, so hopefully you've heard something about it. This [plan](#) will cause large rush hour delays for commuters for 2 - 3 years and has caused much concern. The CTA will be presenting the plan and the alternative routes that they are suggesting and listening to input at a 3-Track Community meeting on:

**Thursday, March 15th, 6 - 8pm**  
**Agassiz School, 2851 N. Seminary**

LVCC will be there passing out postcards so you can contact Mayor Daley to let him know how important public transportation is to you.



## Meet the New Team

### LVCC Adds Two New Staff to Reach Out to the Community

We welcome onboard Betsy Raval as our new [Community Outreach Director](#). Besty lives in Southport Neighbors and will be working with the branches, schools, churches and politicians to grow our branch membership, create awareness in Lake View of who LVCC is, and improve the quality of life in Lake View.

Also joining us is Lynn Albers who will be coordinating various [neighborhood events](#). Two upcoming events include our Century Club Fundraiser (Spring) and LVCC Annual Meeting (this year at Sidetrack on May 15th).

renewal of the 7% cap (SB13). SB13 does several things including:

- Creates the returning veteran homestead exemption,
- Seniors need not reapply for the homestead exemption, and
- Increases the alternative general homestead exemption from \$20,000 to \$60,000.

If SB13 does not pass, you should expect a huge increase in your property tax bill this fall. Renters will likely see increases at renewal.

Call your State Representative and tell them how important SB13 is to you. Ask them to pass SB13. These calls are important because the 7% cap has not been on the "front burner" for awhile.

[Rep. Sara Feigenholtz](#) (773) 296 4141  
[Rep. John Fritchey](#) (773) 871 4000



## New Lake View Dominick's Project Moving Ahead

Construction is expected to begin this summer on a new Lake View Dominick's at 3012 N Broadway. The developer has purchased the property and received the necessary City Council approvals. The plans call for a 5-story structure replacing the old building that burned in June 2005. The new planned development includes 45-50 residential units, parking for both the store and residents, a 40,000 square foot Dominick's store, and some additional retail/office space. The store itself will take more than a year to build.

**Dominick's**

## Upcoming Lake View Events

3/6	<a href="#">SELVN Meeting</a>	7PM	Wellington Ave Church (615 W Wellington)
3/6	Lincoln-Ashland-Belmont Streetscaping Community Mtg w/Aldermen Matlak/Tunney	6PM	St Luke's Church (1500 W Belmont)

3/8	<a href="#">CLVN Meeting</a> and CAPS Meeting	7:00 CAPS 7:30 CLVN	Illinois Masonic Hospital 836 W Wellington - 7th Floor
3/10	Greener Ravenswood Step by Step (Exhibition)	10A-1PM	Welles Park Field House (2333 W Sunnyside)
3/13	<a href="#">Sheil Park (SP) Meeting</a>	7PM	Mystic Celt (3443 N Southport)
3/13	<a href="#">South Lakeview Neighbors (SLN) Meeting</a>	7PM	St. Alphonsus Church (1429 W Wellington)
3/14	<a href="#">Triangle Neighbors Meeting</a>	7PM	LVCC Offices (867 W Buckingham)
3/15	CTA Meeting on <a href="#">Belmont / Fullerton Track Reduction and alternative bus schedules</a>	6PM - 8PM	Agassiz School (2851 N Seminary)
3/20	<a href="#">Belmont Harbor Neighbors (BHN) Meeting</a>	7:30PM	John Merlo Library (644 W Belmont)
3/20	<a href="#">Hawthorne Neighbors (HN) Meeting</a>	7PM	Resurrection School (1050 W School)
3/21	<a href="#">West Lake View Neighbors (WLN) Meeting</a>	7PM	Lincoln-Belmont Library (1659 W Melrose Ave)
3/27	<a href="#">Hamlin Park (HP) Neighborhood Meeting</a>	7:30PM	Hamlin Park Field house (Damen / Wellington)
3/31	Race to Wrigley 5K	Morning	Wrigley Field
4/2	CTA Closures / Reductions	Ongoing to April 2009	Closed: Southport Station Closed: Diversey Station Reduced: Belmont Station
4/5	<a href="#">LVCC Board Meeting</a>	7PM	LVCC Offices (867 W Buckingham)
4/15	CLVN Wine Tasting		
4/23	<a href="#">Southport Neighbors Meeting</a>	7PM	Mercury Theater (3745 N Southport)
4/28	Help Keep Lake View Healthy	9AM-12N	St Luke's Church (1500 W Belmont)
5/15	LVCC Annual Meeting	6PM - 9PM	Sidetrack (3349 N Halsted)

[Forward email](#)

 **SafeUnsubscribe®**

This email was sent to john@johnbecvar.com, by [info@lakeviewcitizens.org](mailto:info@lakeviewcitizens.org)  
[Update Profile/Email Address](#) | Instant removal with [SafeUnsubscribe™](#) | [Privacy Policy](#).

Powered by

